



LAPADA
THE ASSOCIATION OF
ART & ANTIQUES DEALERS



Regotina

BRITISH ANTIQUES MISSION TO MOSCOW



www.lapada.org
www.lapadamodern.org

Media sponsors:

 STYLE.RBC.RU

РБК-ТВ



LAPADA

THE ASSOCIATION OF
ART & ANTIQUES DEALERS

LAPADA is the largest Association of professional art and antiques dealers in the UK. Membership is only open to experienced dealers who are strictly vetted for their knowledge and integrity and who are bound by a strict Code of Practice. We are proud to be bringing twelve of our most distinguished members to this British Antiques Mission to Moscow, representing a variety of disciplines. Each one of them is bringing one stunning work of art to showcase their business to the Russian market in the sumptuous surroundings of the Ambassador's private residence, by kind courtesy of The Ambassador, Dame Anne Pringle.

I would like to thank first and foremost Dame Anne and her embassy staff as well as UK Trade & Investment, the UK government department that has made this exciting trade mission possible. It has been a great pleasure to work in partnership with Natalia Legotina whose companies Kollection and Legotina are both based in Moscow and to be working with the distinguished UK company de Gournay. We are very pleased to be supported by RBC-TV and RBC Business style magazine, the leading Russian business mass media.

We are also delighted that we will be joined by the acclaimed interior designer Lady Henrietta Spencer-Churchill and Robin Duthy of Art Market Research who will share his knowledge of investing in art and antiques. I am very grateful to both of them for joining us.

Sarah Percy-Davis, Chief Executive
LAPADA The Association of Art & Antiques Dealers



I am delighted to be part of this mission to Moscow, an exciting city which I am happy to say I have visited several times before. As a designer who has always worked with antiques as well as contemporary objects, it is a pleasure to be associated with British dealers in fine antiques who are bringing to Russia beautiful and important objects which are examples of the many treasures that can still be found on the market in the UK. In my own business, whether restoring old houses to their former glory or working on newly-built houses, as I have done in Russia, we offer our clients a complete service which if requested includes not only space planning and all aspects of building work and decoration but also furnishings, including antiques, pictures and accessories. It is for this reason that I find working closely with professional dealers such as those who are with us here in Moscow both a pleasure and a constant source of learning. I do hope that all those who come to the British Ambassador's residence will enjoy meeting us and finding out more about what we have to offer. I know that we will enjoy meeting our guests.

Henrietta Spencer-Churchill BILD, FIDA





CONTENTS

Lady Henrietta Spencer-Churchill	4-5
Art Market Research	6
Kollektion Ltd	7
Natalia Legotina Architectural Bureau	7
de Gournay	8
Billiard Room Ltd	9
David Brower Antiques	10
Butchoff	11
Hallidays Fine Antiques	12
W.R. Harvey & Co. (Antiques) Ltd	13
Hatchwell Antiques	14
Lucy Johnson	15
Mayfair Gallery	16
Kevin Page Oriental Art Ltd	17
Trinity House Paintings	18
Wick Antiques Ltd	19
Rutherston & Bandini Ltd	20

Media sponsors:



HENRIETTA SPENCER-CHURCHILL



Double drawing room of a period partly Palladian house in Oxfordshire showing new plaster work and architectural details and fabric on walls and specially commissioned fabrics for curtains.

HENRIETTA SPENCER-CHURCHILL

Lady Henrietta Spencer-Churchill is the eldest daughter of the 11th Duke of Marlborough whose family home is Blenheim Palace. She studied Art History and Languages in Florence and Paris and in 1977 completed a diploma course in Interior Design at the Inchbald School of Design, London.

In 1981 she formed her own Interior Design company, 'Woodstock Designs' which now operates from Woodstock in Oxfordshire and London and undertakes commissions world-wide, specialising in the renovation of country house properties. Her US design company Spencer-Churchill Designs Inc. was formed in 2003.

In 1986 'Spencer-Churchill Designs' was formed to design and produce furnishing fabrics and wallpapers and Henrietta has also produced fabrics for a leading company Marvic Textiles Ltd which are sold throughout America.

Henrietta has written numerous books on classic interior design as well as 'Blenheim and The Churchill Family', a history of her family from John Churchill, 1st Duke of Marlborough, for whom Blenheim was built, to the present day.

Henrietta is a member of the British Institute of Interior Design, Fellow of the International Interior Design Association and past President of the UK Chapter of IIDA. She is on the advisory board of the New York School of Interior Design and teaches there and at other schools in London.

Her latest venture is in television where she recently presented a series for Granada Sky entitled 'Classic Interiors' and produced a pilot programme for Granada and HGTV American television on the 'World's Most Beautiful Homes'. In 2011 Henrietta will launch various collections of licensed products, furniture and lighting in the UK and doors and furniture in the USA.

We are honoured that Lady Henrietta will speak at the Press Conference on "Classic Design – building and renovating for the 21st century whilst retaining character", she will share her experience in renovating period homes and her skill in making them compatible for today's living yet retaining their history and period details. She will also discuss building new houses in a classical style and how to imbue them character and style.

Collectors attending the Private Preview will also have an opportunity to meet Lady Henrietta and to obtain a signed copy of her books.

ART MARKET RESEARCH

INVESTING IN ART & ANTIQUES



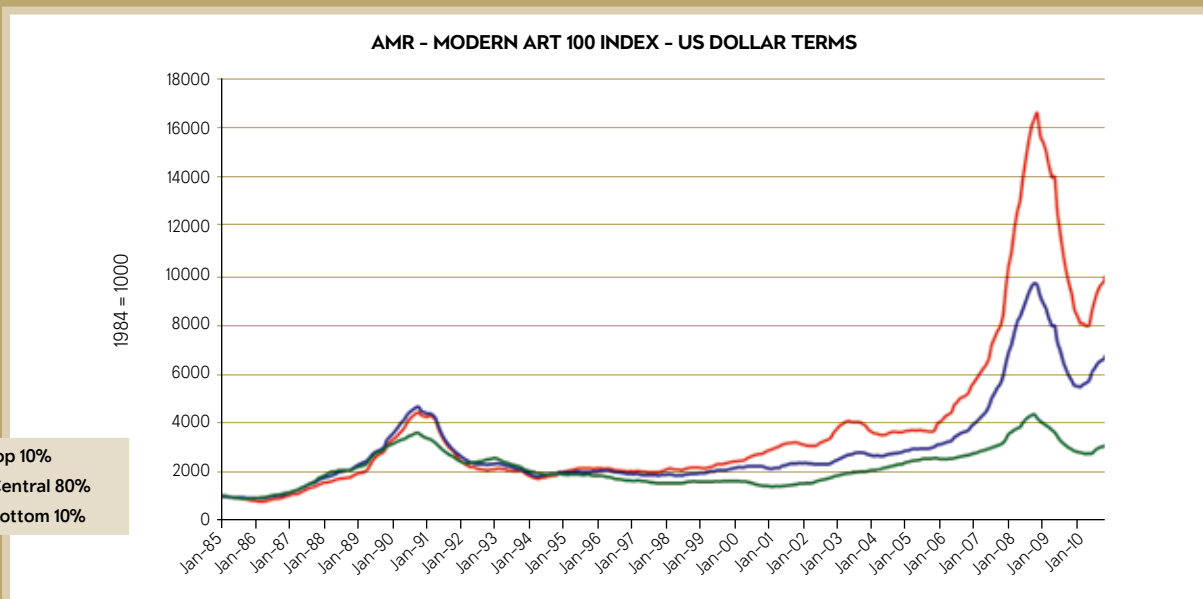
**Robin Duthy, Managing Director
of Art Market Research, London**

Art Market Research is the art world’s leading index-provider. It offers 350 indexes covering virtually all sectors of the art, antiques and collectibles markets. In addition to the sectors on Painting, Photography and Sculpture there are indexes for Furniture, Silver, Porcelain, Chinese Ceramics, Stamps, Coins, Posters, Toys, Wine, Rugs and Carpets, Jewellery, Clocks & Watches and Classic Cars.

Robin Duthy will speak at the press conference on 22 March and also be present at the evening reception as well as being available the following day to speak individually to collectors who would like to discuss current market trends. Mr Duthy’s talk will start with a brief explanation of the methodologies which make the AMR suite of indexes the most wide-ranging and definitive indexes available. He will show charts comparing the Russian Art 100 Index, based on 100 key Russian artists, to indexes of Old Masters, Modern European Painting, Post-War Art and Contemporary Art

and discuss the supply and demand factors in each market and possible future growth rates.

There will be a brief discussion of the Indian and Chinese markets and the effect on international markets of Chinese and Russian buying. There will also be charts showing the movements in French and English 18th-Century Furniture, Art Deco and Modern Furniture, British Silver (18th-Century and Regency), European 18th-Century Ceramics, Clocks and Watches and Jewellery. In every case, Mr Duthy will explain the demand that has caused the price-movements and make some predictions about the next five or ten years. Other charts will explain how the top price-brackets have out-performed the middle and lower price-brackets. Finally there will be a discussion of the turmoil that affected most markets following the collapse of Lehman Brothers in September 2008.





Kollection Ltd. has been working in the Russian market of interior design and construction almost 10 years. The company renders services on supply and expert evaluation of objects of elite furniture, decor, and antiques. Kollection Ltd exclusively represents the world's leading interior brands (George Smith, Townsend Leather and John Sankey) as well as some antique dealers (Hallidays Fine Antiques).

The basic concept of the company is to create a collection of manufacturers, editors, dealers of the highest level targeted for architects and interior designers, as well as high end consumers. Regularly visiting the world's largest exhibition and foreign production, employees of Kollection Ltd select the best pieces of furniture, antiques, decoration, finishing materials and textile. The decision to work exclusively with one or another brand is preceded by a thorough examination of the quality of its production and a serious analysis of the proposed product line.

www.kollection.ru



Natalia Legotina Architectural Bureau has been working in the Russian market of interior design almost 10 years. The Bureau designs and implements architectural projects of public and residential interiors on turn-key basis for high end market. The key to success of the Bureau is individual and detailed approach to each Client. The Bureau package of services is based on international standards of management. Availability of own workshops and supplying structure guarantees appropriate budget and time management of projects. Supplementary services of the Bureau are project management within Russia and the UK and real estate consulting including legal support. The Bureau staff provides their clients with competent assistance in Antiques expertise including appraisals of international experts from LAPADA and CINOA and represent of the clients' interests at Sotheby's and Christie's.

www.legotina.com





de Gournay

HAND-PAINTED WALLPAPER, FABRIC, PORCELAIN & FURNITURE



de Gournay is known for hand-painting the finest quality wallpapers, fabrics & porcelain using the same techniques as used in the 18th century. We are one of the few companies in which every single process is carried out in-house by our own highly skilled craftsmen employing our unique understanding of the original techniques. The warmth, appeal and feel of a hand-made item is the result of the tiny irregularities caused by the human hand striving to achieve perfection. The spirit of the creator is embodied in each and every object we produce making it easily distinguishable by the human eye from products mass produced using the latest technologies. de Gournay is proud of the heart and soul of every product we make.

Clockwise from Left: de Gournay's Louis XV Fauteuil a la Reine in polished walnut finish upholstered with Honey Silk Velvet. L'Eden wallpaper in Terre Fonceé colourway on Scenic Paper and L'Eden silk curtains in custom monochromatic colourway.

Wisteria hand-painted wallpaper in Lavender colourway on Bleached White Dyed Silk with de Gournay's Thomas Johnson George III Mirror shown in red bole and distressed gilt finish. George III Parcel Gilt Settle upholstered in Polar Bear Silk Velvet with de Gournay silk Damask cushions.

de Gournay's Goose Tureen in Famille Rose porcelain with a smooth finish. Askew hand-painted wallpaper in standard colourway on Lilac Hint Dyed Silk with Louis XVI Fauteuil a la Reine and Gustavian Console in distressed ivory and gilt finish.

BILLIARD ROOM LTD

**The World's most desirable Billiard
Tables & Accessories,
The Old School,
Church Lane, Chilcompton, Bath,
Somerset BA3 5HP
T: +44 (0)7779 333321
www.billiardroom.co.uk**

Established by Paul & Julia McKeivor in 1993, Billiard Room has been a regular exhibitor at the London Olympia Fine Art & Antique Fairs for more than 10 years and more recently participated in the inaugural Masterpiece Fair. The McKeivors advise and sell to private clients and interior decorators from around the world and their superlative service includes offering a diverse range of exceptional antique tables restored by a team of dedicated specialists, excellence in the design and creation of new, contemporary, handmade billiard tables, packing, crating, shipping and overseas installation by experienced table fitters, and the greatest attention to detail.



A striking full size (12 foot) Victorian table made for James Blyth, 1st Baron Blyth, for 33 Portland Place, London. Bearing a maker's label Cox & Yeman, Billiard Table Manufacturers, 209A Brompton Road, London. English, circa 1895.



Julia McKeivor



Paul McKeivor

DAVID BROWER ANTIQUES

**113 Kensington Church Street,
Kensington,
London, W8 7LN**

T: +44 (0)20 7221 4155

www.davidbrower-antiques.com

David Brower Antiques, situated in Kensington Church Street's renowned antique street, has been established since 1964. Our recently redesigned showrooms showcase Oriental art in the lower ground floor, specialising in fine Japanese works from the Meiji period and in the upper gallery, European porcelain including our vast inventory of fine 19th century Meissen

porcelain. In our main showroom are displayed many other works of art, often including French and Italian sculpture, Vienna enamels and European ivory.

The mastery of the Japanese craftsmen on display includes metalwork, lacquer ware, ivory and wood carved okimono, porcelain, silver and other fine works. Whilst European porcelain is focussed on 19th century Meissen of the finest quality produced including exhibition pieces and object from great collections. We are also known for our KPM Berlin paintings on porcelain, Sevres, Vienna and other famous factories.



Important Meissen vase, decorated upon a cobalt blue ground, heightened by detailed gilded scrollwork and embellishments. The panel on the front of the vase is after a painting by Caspar Netscher (1639-1684) while the reverse is after a painting by Gabriel Metsu (1629-1667) which depicts the artist with his wife Isabella De Wolff in a tavern. Model number F183. Date: Circa 1880



Howard Brower

BUTCHOFF

**154 Kensington Church Street,
London W8 4BN**

T: +44(0)20 7221 8174

www.butchoff.com

Since the business was established in 1964, Butchoff Antiques has grown to hold one of the largest stocks of 18th and 19th Century English and Continental furniture, mirrors and objects in the UK, specialising in 19th Century exhibition quality pieces and the great cabinet makers of the period. One of the founder members of LAPADA, Ian Butchoff is today acknowledged amongst his peers as one of the leading experts in 19th Century furniture in the country and he regularly vets on the furniture committee of a number of the UK antiques fairs including the world-renowned Olympia Fairs, the BADA Fair and the LAPADA Fair in Berkeley Square.



The Hausburg Cabinet

The exterior of this jewel of craftsmanship is constructed in ebony as a representation of the exterior of Rheims Cathedral decorated with marquetry work of the very finest ability and technique with representations of important British buildings including Westminster Abbey and Windsor Castle. Signed in marquetry inlay 'F.L. Hausburg Fecit Liverpool Begun 1840, Finished in 1857'.



Ian Butchoff



Adam Kaye

Media sponsors:



HALLIDAYS FINE ANTIQUES

**Queen Street,
Dorchester-on-Thames,
Oxfordshire OX10 7HL
T: +44 (0)1865 341149
www.hallidays.com**

**Kollektion
Sadovaya – Kudrinskaya
St.23 / 1 bld.4
123001
Moscow
e-mail: info@kollektion.ru**

Hallidays Fine Antiques is a family-run business that has been established for over 65 years and is based in the heart of Oxfordshire, one hour from London. In Hallidays' extensive 4000 sq ft showrooms you can view an impressive and varied collection of fine English and Continental antiques from the mid 17th Century to the late 19th Century, and in particular of the Regency and Empire periods. Alongside their selection of the finest oak, walnut and mahogany furniture, Hallidays stock a variety of decorative accessories and the company is also internationally renowned for their fabulous hand-made English panelled room schemes. In addition Hallidays offer an international Fine Antique Furniture consulting service – Managing Director Edward Reilly-Collins is able to advise on suitable pieces and styles for any situation as well as sourcing antique furniture, from a single piece to an entire collection.



A French gilt bronze centre table c.1880 with moulded Patricia green marble top above a decorative frieze with two opening drawers to one side and dummy drawers to the reverse with cast gilt bronze and classical decoration.



Edward Reilly-Collins

W.R. HARVEY & CO. (ANTIQUES) LTD

**86 Corn Street, Witney,
Oxfordshire OX28 6BU
T: +44 (0)1993 706501
www.wrharvey.co.uk**

Specialists in fine English furniture dating from the reigns of Charles II through to George IV. In their showrooms in Witney, Oxfordshire, you will find authentically decorated rooms displaying fine English antiques to their very best advantage. An outstanding range of pieces backed up by an unsurpassed knowledge of English antique furniture between 1680 and 1830 makes a visit to W.R. Harvey & Co. or their website a necessity for every serious collector and interior designer. An old established family business with over 60 years experience, they are used to handling the rare and fine pieces for which they have become renowned.



An extraordinarily rare and particularly fine William and Mary Period kingwood oyster-veneered and rosewood cross-banded cabinet on chest by Thomas Pistor of London, circa 1690.



James Mills



David Harvey

Media sponsors:



HATCHWELL ANTIQUES

The Furniture Cave,

533 Kings Road,

London, SW10 OTZ

T: +44 (0) 207 351 2344

www.hatchwellantiques.co.uk

Hatchwell Antiques is a family business that has been established since 1961. Based in Chelsea, central London, we also frequently exhibit at art and antique fairs in London, Paris and Brussels. Our stock extends from the 18th century to the mid 20th century, and includes furniture, lighting, clocks and scientific instruments. We also have a unique collection of aeronautica, which includes wind tunnel and scale models, propellers, turbines and ejection seats from iconic aircraft such as Concorde, Zeppelin, Vulcan and Harrier.

Wind tunnel model of a Tupolev Tu-22 "Blinder", circa 1960.

A cold war British military intelligence wind tunnel model of a Soviet Tupolev Tu-22 supersonic bomber, NATO reporting name "Blinder". The model was made at RAE Farnborough, and is constructed from copper and wood.



Allan Hatchwell

LUCY JOHNSON

10 Billing Place,

London SW10 9UW

T: +44 (0)20 7352 0114

www.lucy-johnson.com

Lucy Johnson offers an invigorating mixture of Modern British pictures, mainly St. Ives School, alongside her traditional taste in fine quality European furniture from the 17th century. She has also sold for some years eclectic and unique pieces of furniture in bronze which she commissions from leading British sculptors such as Laurence Edwards of Creek Men fame. In doing this, she escapes being too enmeshed in strictly traditional taste and disciplines.



JOHN TUNNARD, A.R.A.
(BRITISH 1900-1971)

Phantom

Signed, numbered and dated 'John Tunnard/TRG 26. 59.' (lower right).

Titled, signed and dated on the reverse. Pencil, black ink, coloured crayon, watercolour and bodycolour.

Watercolour on the reverse. An exceptional picture executed at the height of Tunnard's 'space age' period.



A museum quality, early 17th century Florentine pietre paesina, ivory, rosewood, ebony & ebonised, table cabinet displaying all the refinements of the technique and the high degree of virtuosity achieved by the craftsmen of the time.



Lucy Johnson

Media sponsors:



MAYFAIR GALLERY

**39 South Audley Street,
London W1K 2PG**

T: +44 (0)20 7491 3435

www.mayfairgallery.com

A magnificent Russian silver-gilt and enamel-decorated dinner service, 11th Artel

48 pieces, comprising: twelve dinner plates, with scratched inventory number 3610C; twelve sherbet cups, stands and spoons, the cups applied with plaques supporting the enameled letter 'R', the spoons enameled en suite, the stands with scratched inventory number 3609C, the cups with inventory number 3608C. Moscow, 1908-1917.



The Mayfair Gallery opened for business in 1975, fulfilling the lifelong ambition of its founder Mati Sinai who had a keen interest in antiques and their historical importance from a young age. Mati traveled the globe in search of unique and important objects and his philosophy of providing exceptional pieces and unsurpassed service at a fair price remains to this day, a commitment that ensures his customers' expectations are consistently exceeded. Mayfair Gallery has over one thousand individually selected items of stock and operates from two locations, the main gallery on South Audley Street in Mayfair, at the heart of London's prestigious fine art market, while new warehouse premises in the leafy village of Highgate provides space to display larger items of stock and a workshop to carry out restorations.



Mati Sinai

KEVIN PAGE ORIENTAL ART LTD

**2-4 Camden Passage, Islington,
London N1 8ED**

T: +44 (0)20 7226 8558

www.kevinpage.co.uk

A fine Japanese multi-metal dish depicting a hawk perched on foliage surrounded by decorative designs. Made by MASANOBU and engraved by KAZUAKI. Meiji period, circa 1880.

Kevin Page opened his first antiques gallery in Camden Passage, London in 1978. The present building houses eight showrooms containing a world renowned collection of Japanese works of art from the Meiji period (1868 – 1912) and Chinese porcelain and furniture dating from the 17th through to the 19th Centuries. The Japanese works of art that are displayed in the gallery consist of a fine selection of Satsumaware, multi-metalware including bronzes by Miyao, unusual screens, intricately carved ivory and wood okimono's, inro's, tsuba's and a large collection of netsuke. The Chinese antiques includes an array of porcelain vases as well as furniture including tables, stands, chairs, benches and cabinets.



Kevin Page

Media sponsors:



TRINITY HOUSE PAINTINGS

**50 Maddox Street,
London W1S 1AY**

T: +44 (0)20 7499 8958

www.trinityhousepaintings.com

Trinity House Paintings has built a strong reputation for both quality and expertise and established itself at the heart of the international art market since it was founded by Simon Shore and Steven Beale in 2006. They have recently opened a gallery on two floors in an elegant Regency building at 50 Maddox Street, Mayfair, in the centre of London's globally important art market district, to show off their Impressionist, Post-Impressionist and Modern British works. Trinity House Paintings offers a wide range of services to clients - private collectors, interior designers and museums including advice on every aspect of sourcing, buying, selling and maintaining fine art from experienced but approachable experts who can guide them through the international art world.



John Atkinson Grimshaw (British, 1836-1893)
Greenock. Oil on canvas. 20 x 30 inches.
Signed.



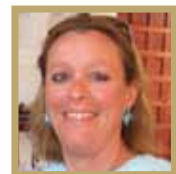
Steven Beale

WICK ANTIQUES LTD

**Fairlea House,
110-112 Marsh Lane,
Lymington,
Hampshire SO41 9EE
T: +44(0)1590 677558
www.wickantiques.co.uk**

Charles Wallrock set up Wick Antiques 25 years ago and has been trading in Lymington, Hampshire and London ever since. He specialises in 18th and 19th century fine furniture and works of art as well as the unusual and unique. In 1990 he married Caroline who was trained at Christie's and worked at Sotheby's as a cataloguer and auctioneer in the Japanese and Islamic departments. The Wallrocks buy and sell internationally as well as exhibiting at leading antiques fairs. Charles is a vetter for 19th Century furniture at the June Olympia Fine Art and Antiques Fairs and has recently been invited to join the advisory board of the LAPADA Fair in Berkley Square.

A Table attributed to Holland and Sons, a superb thuyawood centre table, with amboyna, tulipwood and satinwood marquetry inlays with a circular top raised upon a tripod base. London, circa 1860.



Caroline Wallrock



Charles Wallrock

Media sponsors:



RUTHERSTON & BANDINI LTD.

5 Georgian House

10 Bury Street

London SW1Y 6AA

T: +44 20 7930 0395

pasi@netsukeandinro.com

January 2010 saw the the opening of a new Japanese art business in London, Rutherford & Bandini Ltd, run by two veterans of Sotheby's and the Japanese art scene, Max Rutherford and Rosemary Bandini.

An Oxford graduate in Russian and French, Max Rutherford's career began in Sotheby's London in 1979. For 8 years he worked in the 19th and 20th century Impressionist and European paintings departments, overseeing the paintings sections of the Russian sales. In 1992-1993 he spent a year studying Japanese before rejoining Sotheby's London in its Japanese Department, becoming Head of Department five years later, and leaving after a further five years to manage Sydney L. Moss Ltd., London's oldest Asian art gallery.

Rosemary Bandini worked in Sotheby's Japanese Department from 1977, before marrying Luigi Bandini of Eskenazi in 1978. She continued her work in Japanese art, preparing exhibition catalogues at Eskenazi until his death in 1996. She set up as an independent dealer in 1998. She is the author of several scholarly works recording individual netsuke collections, has published several articles and gives regular lectures on the subject of netsuke.

Together the partners recently organised the London Netsuke Symposium.



A wood netsuke of a Dutchman in Chinese silk jacket, soft narrow trousers and a Korean hat, an interesting assortment of elements from various countries. Dutch sea captains were known for their fashionable clothes and such a coat would have been very chic. Unsigned. Height: 15.3cms. Circa 1780.



Max Rutherford



LAPADA

THE ASSOCIATION OF
ART & ANTIQUES DEALERS

LAPADAMODERN

CONFIDENCE IN MODERN & CONTEMPORARY ART & DESIGN

Buy with confidence from the
finest antiques to the best in
contemporary fine art from
the UK's largest association of
professional dealers.

www.lapada.org

www.lapadamodern.org



РБК-ТВ

Смотреть,
чтобы
понимать

Программа «Компании»

Наши гости – топ-менеджеры крупнейших российских и международных компаний. В эфире они рассказывают о том, чем живут их компании сегодня и какие перспективы ожидают их в будущем.

Ежедневно, днём

*Мария Строева,
ведущая программы "Компании"*



V.I.P.



beauty!



CHIC!



wow!



ГЛАМУР



luxury



~~шурме~~!

наши редакторы часто уходят в отпуск.
у них повышенное
сердцебиение



STYLE.RBC.RU



UK
TRADE &
INVESTMENT



LAPADA
THE ASSOCIATION OF
ART & ANTIQUES DEALERS

KOLLECTION
MOSCOW-LONDON-PARIS
1793 • 1799

Regotina



www.lapada.org
www.lapadamodern.org

Media sponsors:

 **STYLE.RBC.RU**

РБК-ТВ